



www.mysuperb.com.au

p 1300 008 188



SUPERB
SCRATCH 'N DENT

HOW IT WORKS 6 easy steps!



1

Take a photo of the damage



2

Log onto www.mysuperb.com.au and request a repair



3

Upload your photos with a description



4

A Superb representative will contact you and make all the arrangements



5

You only pay a low repair fee from **\$49.95*** for passenger vehicles



6

A repairer will be in contact to schedule your repair date



Repairs From **\$49.95***

EXPLORE

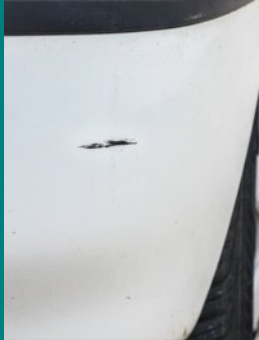
and let us take care of the scratch 'n dents when you get home



Bumper Bar Scratch or Scrape*

Repair one scratch or scrape up to 450mm in length and 20mm in depth. Excluding lights, metal bumper bars, Chrome finishes, decals and internal structural damage including mounting brackets, damage to lights or headlight covers, damage to any electrical or mechanical mechanism.

*Terms & Conditions Apply.



Deep Scratch*

Repair one paint chip or deep scratches down to the metal surface up to 25mm in diameter on any vertical painted metal panel. (One panel per repair).

*Terms & Conditions Apply.



Body Pressure Dent*

Repair one pressure dent up to 50mm in diameter on any flat single panel where the paint has not been chipped or damaged. (excludes dents on style lines and metal folds, edges, corner and dents where there is not sufficient access to rear of panel).

*Terms & Conditions Apply.



Alloy Wheel Scrapes*

Repair one alloy wheel scratch or scrape by repairing damaged area. Excluding machine, chrome finished or powder coated alloy wheels and structural damage to the wheel. We do not guarantee an exact colour match when repainting any alloy wheel.

*Terms & Conditions Apply.

*Conditions apply; see website for full details at www.mysuperb.com.au/terms-conditions