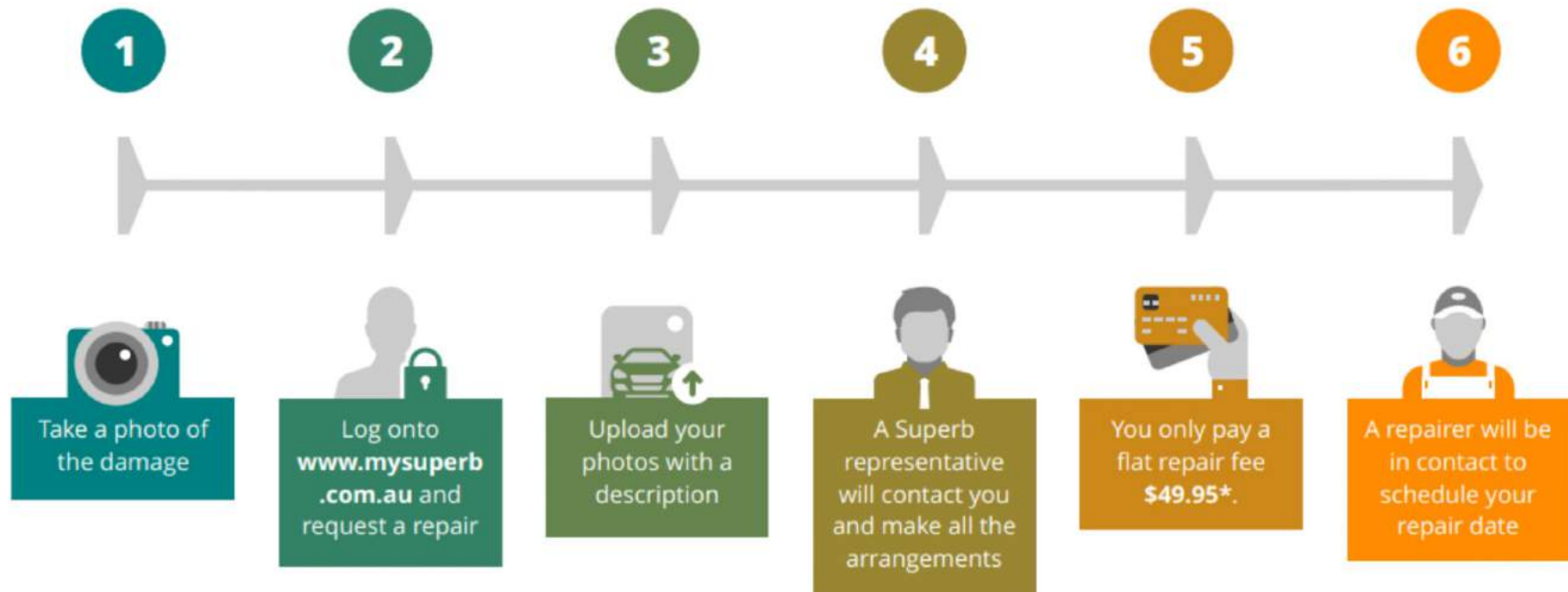


We make it easy for your customer...
All they have to do is....

\$49.95
Repairs*



FAQ's

How many times can I request a repair?

Passenger vehicles: Unlimited repairs within the membership term*.

If I have multiple repairs to be done at once how much will it cost me?

Passenger vehicles: \$49.95 per one repair.

These fees apply if the damage fits the criteria of our membership terms and conditions.

When do I pay the fixed repair fee?

Payment of repair fee is required before inspection/quotation and on-site repair.

How long will it take till my request is attended to?

We are required to provide a quote within 14 days from initial contact, Superb is required to complete the repairs within 30 days from the acceptance of the repair quote by the member.

What does the Membership Cover?

The membership will cover your nominated vehicle for repairs to painted alloy wheels, bumper bar, body kits, exterior mirror casings, paint chips, stone chips and deep scratches, that are within the membership terms and conditions.

- Fixed cost cosmetic repairs for your nominated vehicle
- Access to qualified industry professional repair technicians
- Door to door service or fixed locations

*Terms & Conditions Apply.

What happens if my repair doesn't fit the criteria?

Superb will provide the member a quote to fix the damage, the member can use the initial payment of the repair fee towards the repair quote or have the initial payment of the repair fee refunded in full to the member if they choose to not to proceed.

What should I be considering when I book a call out?

Check if the repair fits the guidelines provided in the membership terms and conditions, unfortunately we will not repair any damage outside the scope for the agreed repair fee however we are more than happy to provide a quote to repair it at our standard service prices.

What is a service area?

The service area is limited to your postcode address within the greater metropolitan area of Sydney, Melbourne, Adelaide, Brisbane, Canberra and such areas as advised by Superb from time to time**.

** Please provide suitable work area around the vehicle, the area we require must be 2 metres wide around the vehicle and within 25 meters from an electrical power point. Also the area needs to be on private property.





LEATHER TEAR OR SCRATCH

Repair one tear or scratch in leather and vinyl seats and arm rests up to 80mm in length and 5mm in width (Excludes wear and tear, parted seams, or damage to instrumentation panel, headliner or to steering wheel).

\$49.95
Repairs*

BEFORE



AFTER



*Terms & Conditions Apply.



Deep panel scratches up to 60mm

Alloy wheel scrape - no size limit

Surface scratches - covering 5 panels

Mirror casing scrapes - no size limits

Bumper bar and body kit repairs up to 550mm



WINDSCREEN CHIPS

Repair up to one stone chip on the front windscreen. The maximum size of each stone chip is 20mm in diameter. These repairs do not include stone chips that render the vehicle unroadworthy. Excludes damage affecting the primary vision of the driver.

\$49.95
Repairs*

BEFORE



AFTER



Windscreens O'Brien
Is our preferred repairer

*Terms & Conditions Apply.



Deep panel scratches up to 60mm Alloy wheel scrape - no size limit Surface scratches - covering 5 panels Mirror casing scrapes - no size limits Bumper bar and body kit repairs up to 550mm



SIDE MIRROR SCRATCH OR SCRAPE

Repair paint scratches or scuffs on side mirror casing. (excludes chrome finished casings, lights and structural damage). 1 mirror casing per repair.

\$49.95
Repairs*

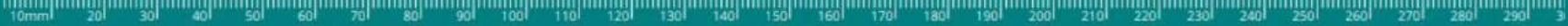
BEFORE



AFTER



*Terms & Conditions Apply.



Deep panel scratches up to 60mm

Alloy wheel scrape - no size limit

Surface scratches - covering 5 panels

Mirror casing scrapes - no size limits

Bumper bar and body kit repairs up to 550mm



SURFACE SCRATCH

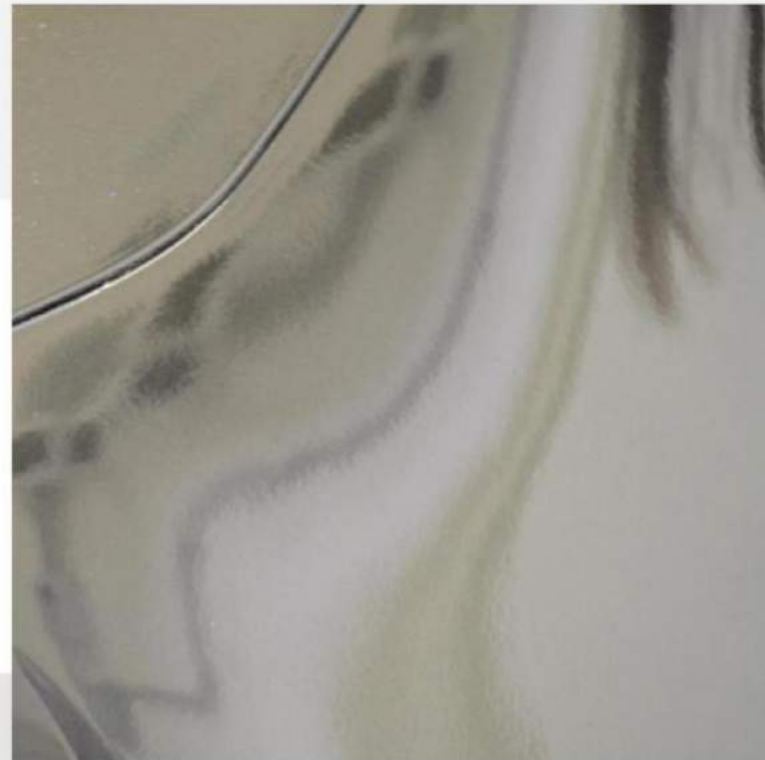
Repair surface scratches on up to 5 panels that have not cut through the clear coat.

\$49.95
Repairs*

BEFORE



AFTER



*Terms & Conditions Apply.



Deep panel scratches up to 60mm

Alloy wheel scrape - no size limit

Surface scratches - covering 5 panels

Mirror casing scrapes - no size limits

Bumper bar and body kit repairs up to 550mm



PAINTED OR POLISHED ALLOY WHEEL SCRAPES

Repair one painted alloy wheel scratch or scrape by repairing damaged area.
Excluding chrome finished or powder coated alloy wheels and structural damage to the wheel.
We do not guarantee an exact colour match when repainting any alloy wheel.

\$49.95
Repairs*

BEFORE



AFTER



*Terms & Conditions Apply.

10mm 20 30 40 50 60 70 80 90 100 110 120 130 140 150 160 170 180 190 200 210 220 230 240 250 260 270 280 290 300

Deep panel scratches up to 60mm

Alloy wheel scrape - no size limit

Surface scratches - covering 5 panels

Mirror casing scrapes - no size limits

Bumper bar and body kit repairs up to 550mm



BODY PRESSURE DENT

\$49.95
Repairs*

Repair one pressure dent up to 60mm in diameter on any flat single panel where the paint has not been chipped or damaged. (excludes dents on style lines and metal folds, edges, corner and dents where there is not sufficient access to rear of panel).

BEFORE

AFTER



*Terms & Conditions Apply.

Body Pressure Dent
up to 60mm in diameter



Deep panel scratches up to 60mm

Alloy wheel scrape - no size limit

Surface scratches - covering 5 panels

Mirror casing scrapes - no size limits

Bumper bar and body kit repairs up to 550mm



DEEP SCRATCH

Repair one paint chip or deep scratches down to the metal surface up to 60mm in length on any vertical painted metal panel. (One panel per repair).

\$49.95
Repairs*

BEFORE



AFTER



*Terms & Conditions Apply.



Deep panel scratches up to 60mm

Alloy wheel scrape - no size limit

Surface scratches - covering 5 panels

Mirror casing scrapes - no size limits

Bumper bar and body kit repairs up to 550mm



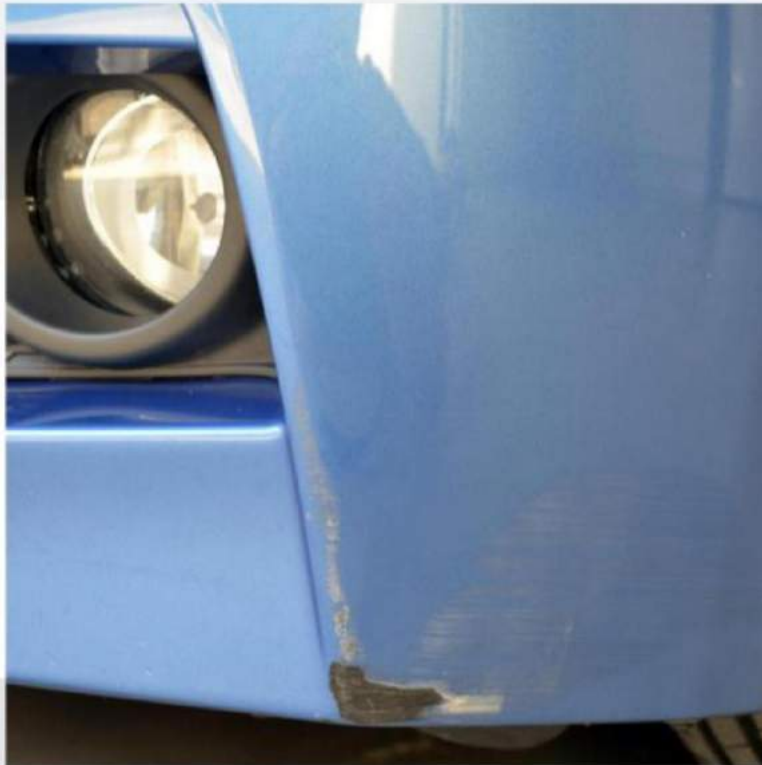
BUMPER BAR & BODY KIT SCRATCH OR SCRAPE

\$49.95
Repairs*

Repair one scratch or scrape up to 550mm in length and 20mm in depth.

Excluding lights, metal bumper bars, chrome finishes, decals and internal structural damage including mounting brackets, damage to lights or headlight covers, damage to any electrical or mechanical mechanism.

BEFORE



AFTER



*Terms & Conditions Apply.

10mm 20 30 40 50 60 70 80 90 100 110 120 130 140 150 160 170 180 190 200 210 220 230 240 250 260 270 280 290 3

Deep panel scratches up to 60mm

Alloy wheel scrape - no size limit

Surface scratches - covering 5 panels

Mirror casing scrapes - no size limits

Bumper bar and body kit repairs up to 550mm

What makes us better than the competition....

We operate similar to how insurance companies schedule their repairs by organising repairs closest to where your customer lives. This is our greatest advantage as we have the **flexibility** to service most areas across Australia!



We DON'T limit your customers to the service and availability of repair vans



Repairs are scheduled closest to where your customer is residing / mobile or fixed locations options



We support the local repair specialist with quality experience and repairs



We service all customers in EVERY STATE and COVER RURAL AREAS*

We make it convenient!

*Subject to customers living in a serviceable area.